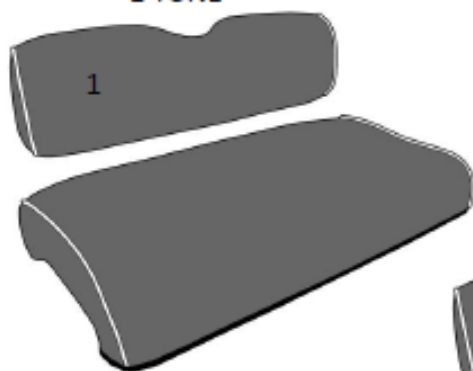


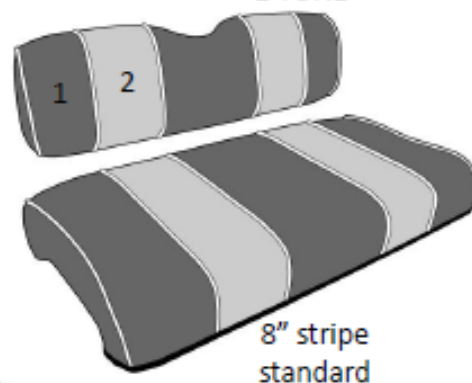
CUT AND SEWN OPTIONS

Step 1 - select pattern

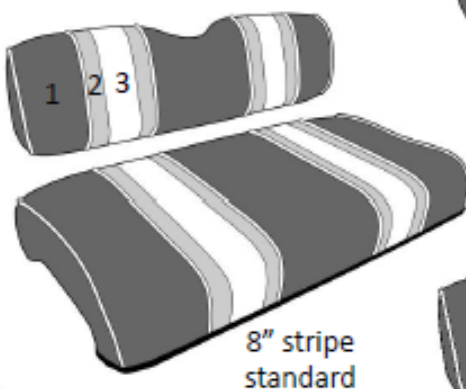
1 TONE



2 TONE



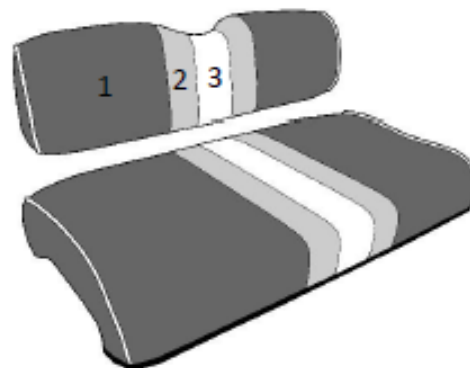
3 TONE



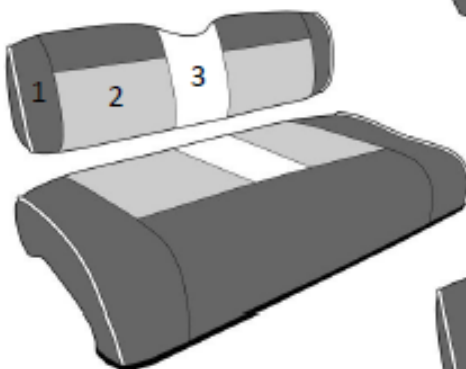
CENTER STRIPE



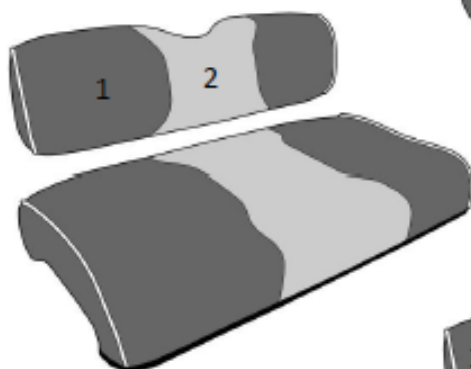
HELMET STRIPE



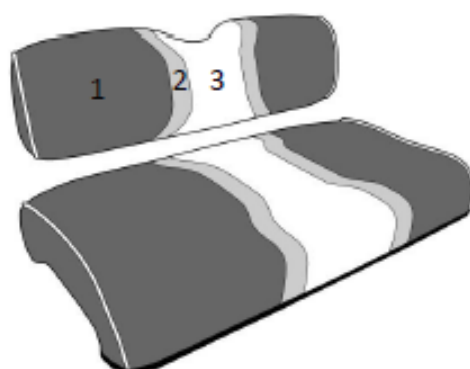
KING RANCH



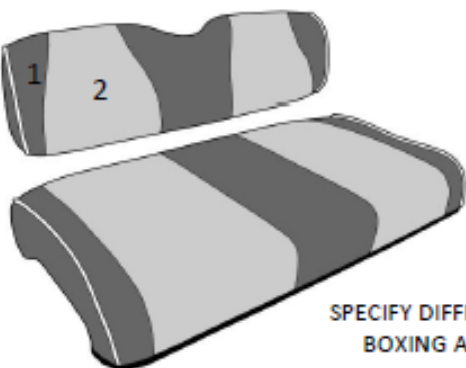
HOUR GLASS 2 TONE



HOUR GLASS 3 TONE



SCULPT STRIPE

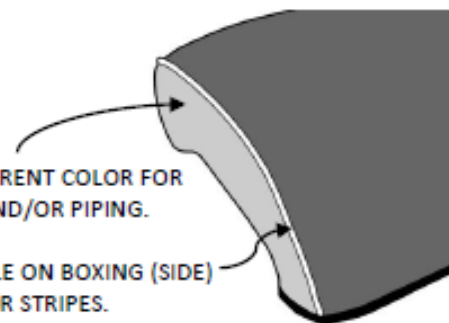


REAR KIT:

Available as assembly or cover sets for oem, factory installed rear kits. Cover sets available for after market rear kits. Unsure? Provide measurements front-to-back and side-to-side including minimum and maximum tolerance.

SPECIFY DIFFERENT COLOR FOR BOXING AND/OR PIPING.

PIPING AVAILABLE ON BOXING (SIDE) AND/OR STRIPES.

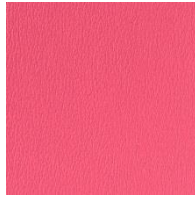


Step 2 – select color(s) Note: Colors are representative only and should not be construed as an exact match of the listed product.

STANDARD OPTIONS:



RED



PINK



ORANGE



YELLOW



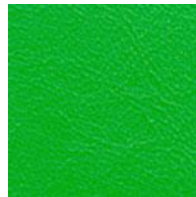
GOLD



WHITE



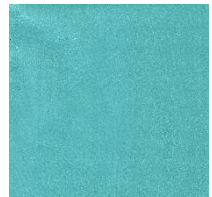
BURGUNDY



LIME



HUNTER GREEN



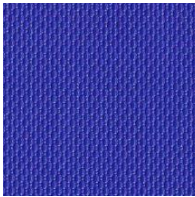
OCEAN



LIGHT BLUE



ROYAL



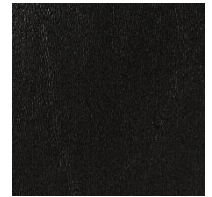
ROYAL TREXX



PURPLE



BROWN



BLACK



BLACK PERF



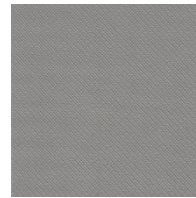
BLACK CARBON



NAVY



LIGHT GRAY



SILVER CARBON



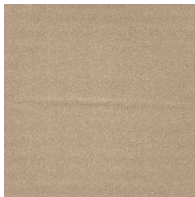
GRAY



CC BUFF



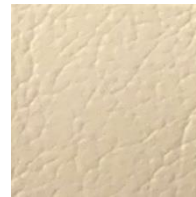
EZ TAN



CC LIGHT BEIGE



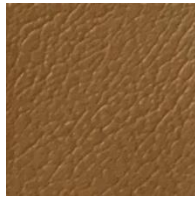
EZ MUSHROOM



SNOW STORM



YAM OYSTER



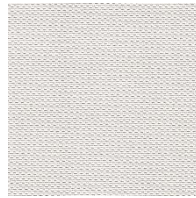
CC CAMILLO



EZ STONE BEIGE



YAM STONE



WHITE TREXX

Leather Grain Vinyls



HONEY



BRIAR

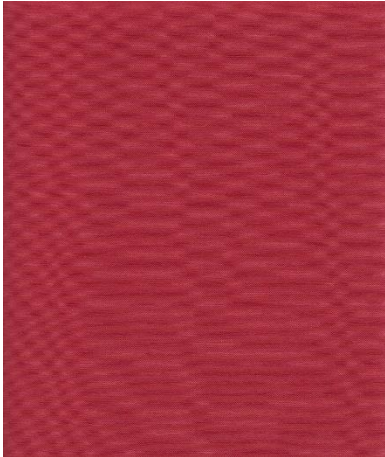


BUCK



COAL

Metallic Vinyls



SM CRIMSON RED



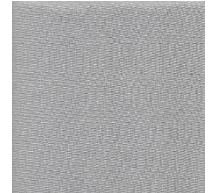
SM KIWI



SM ZEUS BLACK



**SM CARBN
DK GREY**



**SM PLATA
SILVER**



**SM SAPPHIRE
BLUE**



**SM MOCHA
BROWN**



SM METEOR

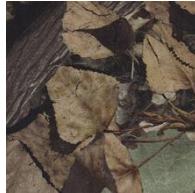


SM TAUPE

Camo



MOSSY OAK BREAKUP



**HIDDEN CREEK
AUTUMN**



**HIDDEN CREEK
MARSH**

Unless otherwise specified, clear or white thread will be used.

Colored thread is available at no additional cost.



OPTIONAL UPGRADES / Additional Charges Apply:

Pleated vinyl:

Pleated vinyl provides visual interest as opposed to flat vinyl. Vinyl colors are no longer available in a choice of thermal heat-sealed pleat. This material had a polyester fiber fill, giving it the look of vintage automotive trim. If pleats are preferred, it will be hand sewn to achieve desired result. This will be listed on your invoice as p/n: **HS PLT**

Piping:



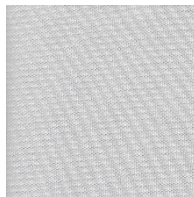
In sewing, piping is a type of trim consisting of a strip of folded fabric over a cord that is then inserted into a seam to define the edge of the cover. Customers request contrasting colored piping to create a neat, attractive finish to the look of their seat. Piping available on the Boxing Only (p/n: **PIPING-BOXING ONLY**), on Stripes Only (p/n: **PIPING-STRIPES ONLY**) or on Boxing and Stripes (p/n: **PIPING-BOXING/STRIPES**) in any of the above colors.

Cool Touch:

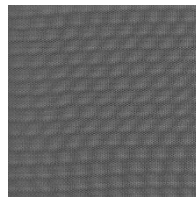
Up to 25% cooler than traditional vinyl! This will be listed on your invoice as p/n: **CT UPGRADE**.



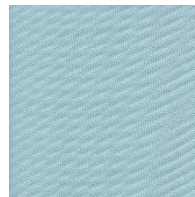
CT WHITE



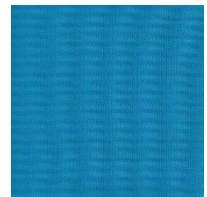
CT LT. GREY



CT GREY



CT ICE BLUE



CT ROYAL



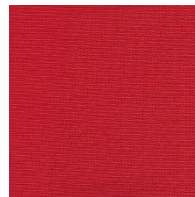
CT BEIGE



CT NAVY



CT BURGUNDY



CT RED



CT PEBBLE

Step 3 – identify make/model for front covers or cushion

Step 4 – Please provide overall measurements if ordering an aftermarket rear seat!

Upholstery Tip: Sewn vinyl does not have the same 4-way stretch as factory style seamless vinyl. Remove the original cover and warm the replacement cover to ease the installation. Use relief cuts where applicable.